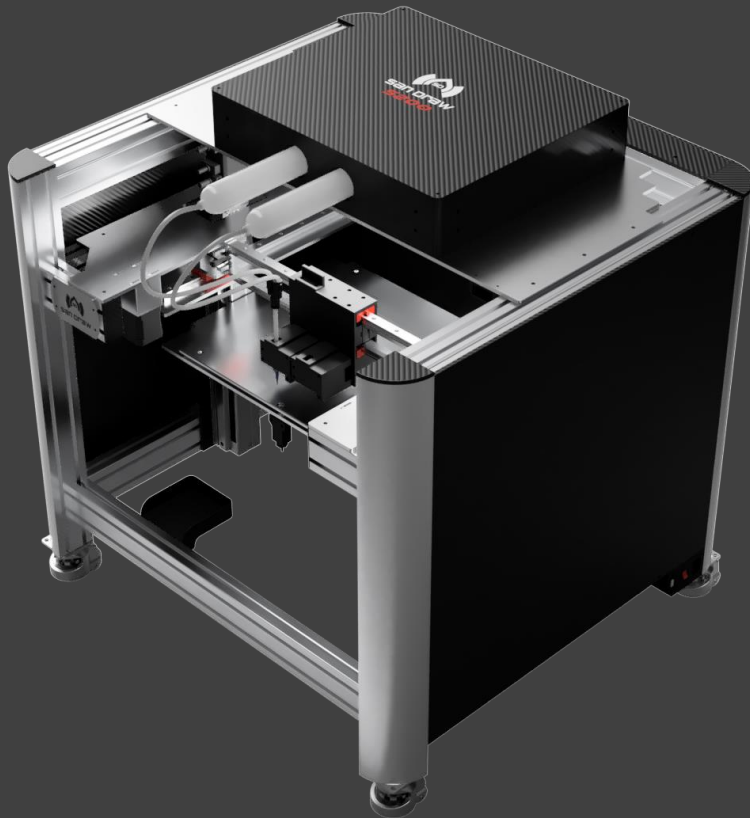
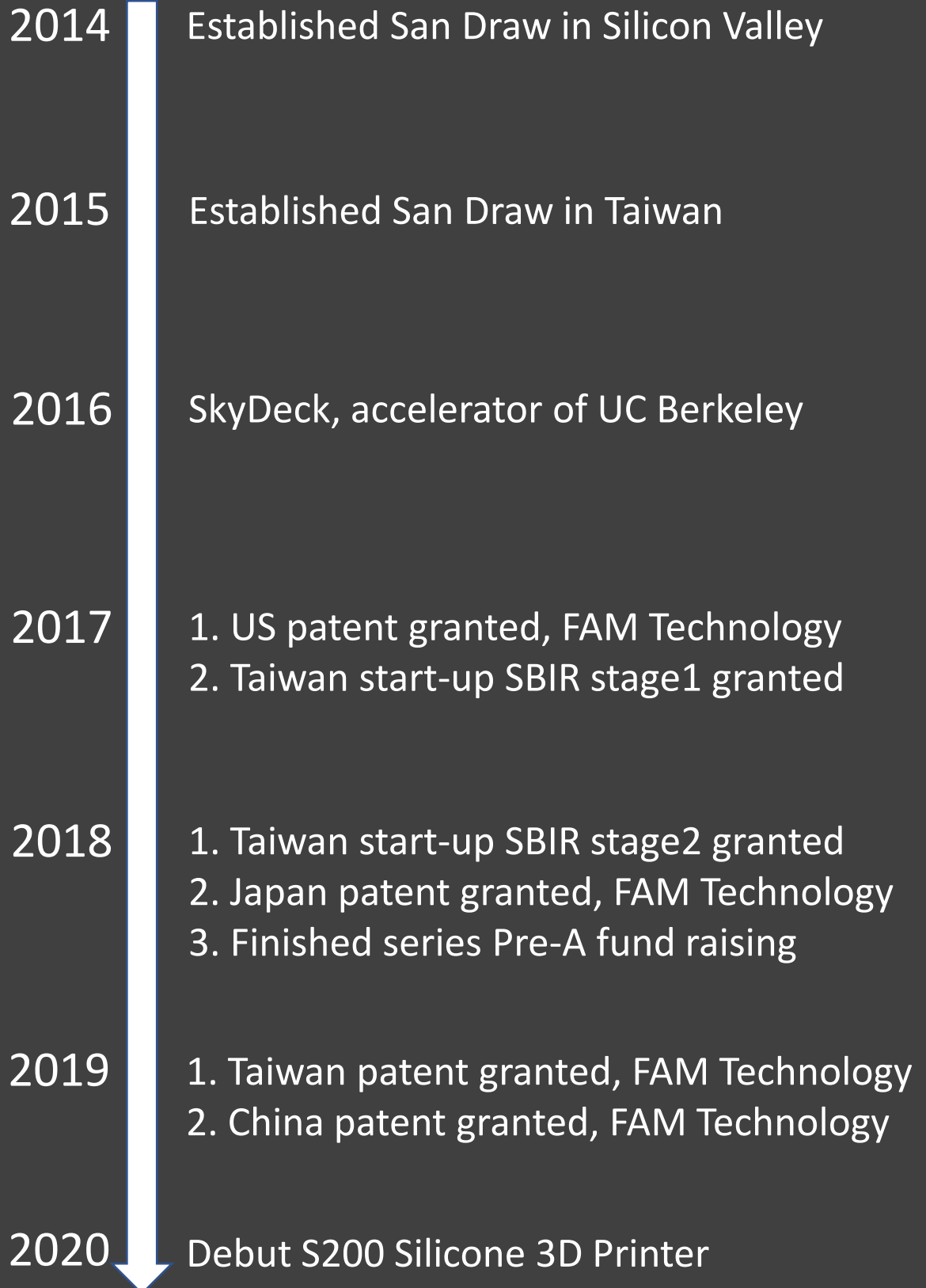




Silicone 3D Printing Pioneer



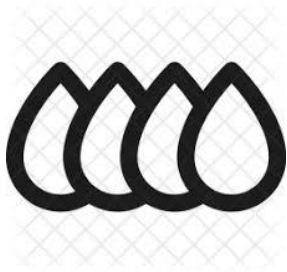
San Draw Inc



FAM Technology

FAM™ stands for Fluid Additive Manufacturing, and it is an additive manufacturing process specially designed for RTV silicone and liquid silicone rubber (LSR). It's world's first silicone 3D printing technology and has been patented in many countries.

Advantages



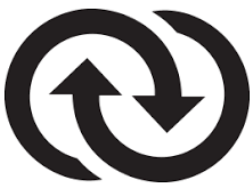
Multiple Silicone Selections

We develop silicones with different features to apply to your versatile applications, including high elasticity, life-like touch, high strength, and high rigidity.



Bio-compatibility

Many of our silicones are certified by ISO10993, making it suitable for medical device, medical simulator, wearable, and prosthesis.



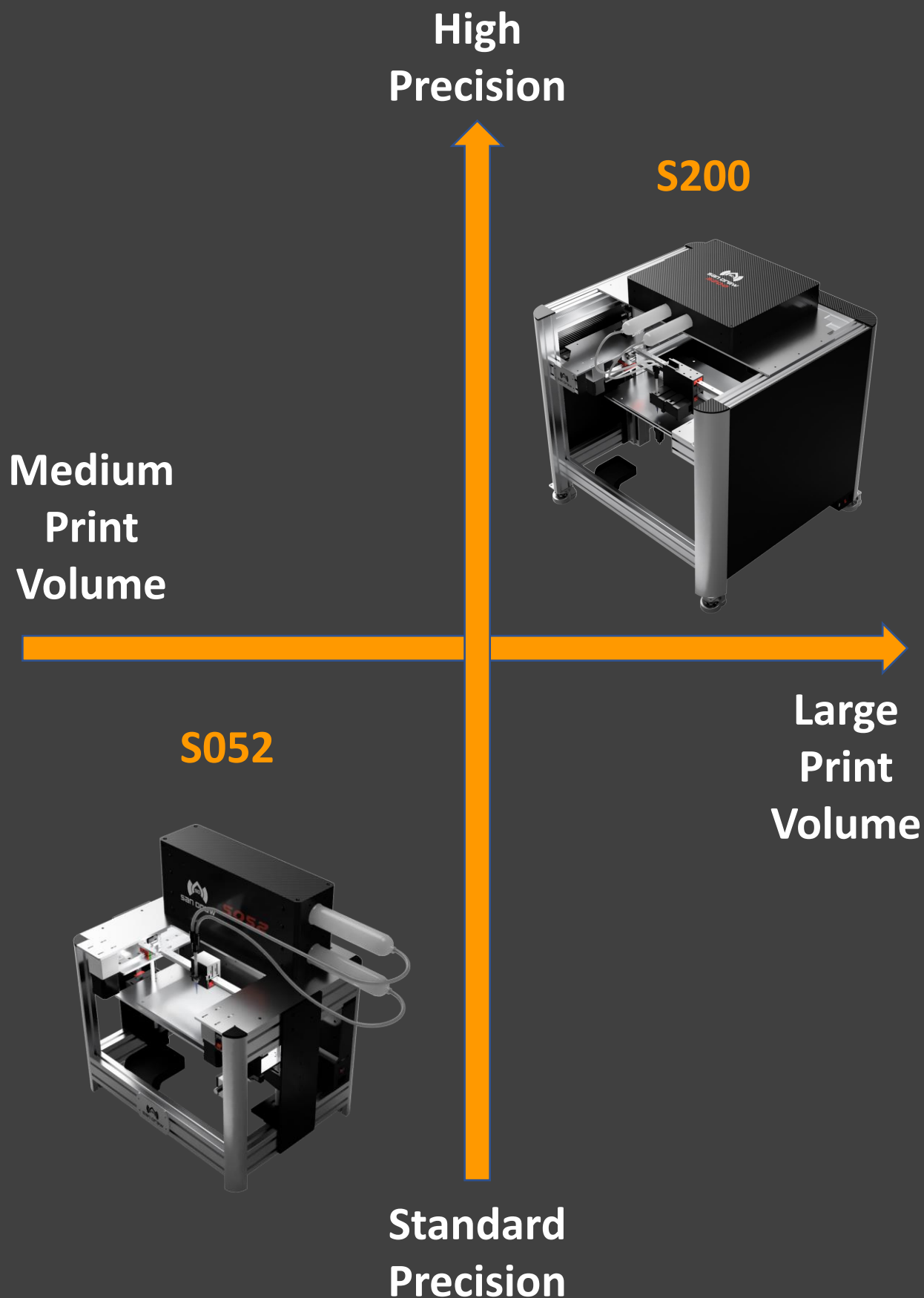
Bridging prototyping & mass production

We develop a series of 3D printing LSR (SIL50 and SIL70) with similar mechanical properties to injection molding LSR, enabling a seamless transition from prototyping with LSR Silicone 3D Printer to mass production with liquid injection molding machine.

Our Material

We have the broadest material selection of 3D printing silicone

Silicone	SIL 50	SIL 70
Type	2-part LSR	2-part LSR
Color	Transparent	Transparent
Hardness	Shore A 50	Shore A 70
Tensile Strength	1,750 psi	1,550 psi
Tear Strength	40 kgf/cm	25 kgf/cm
Elongation	700 %	460 %
Certification	ISO 10993-5 ISO 10993-10	ISO 10993-5 ISO 10993-10
Comparable silicone for liquid injection molding	Yes	Yes



Model	S052	S200
Print Technology	FAM	FAM
Software	FAMufacture	FAMufacture
File Type	STL	STL
Connectivity	USB cable	USB cable
Operating System	Windows 10	Windows 10
Print Volume	200 x 150 x 100 mm	235 x 270 x 150 mm
Printer Dimension	460 x 350 x 440 mm	700 x 700 x 700 mm
Curb Weight	Approx. 20kg	Approx. 60kg
Barrel Number	2	2
Nozzle Number	1	1
Z axis motion	Stepper Motor w/ screw	Linear Actuator w/ ball screw
Z axis Repetitive Positioning Accuracy	N/A	±0.02 mm

Model	S052	S200
XY Motor Step Angle	1.8°	0.36°
Recommended Z layer thickness	0.2 mm	0.2 mm
Nozzle Diameter	0.4 mm, 0.2mm	0.4 mm, 0.2mm
Calibration	Semi-Automatic	Automatic
Roller w/ brake	No	Yes
Material Compatibility	SIL50, SIL70	SIL50, SIL70
Power	110 V / 220 V	110 V / 220 V

To see is to believe

<https://www.youtube.com/watch?v=a0rC7lrN0cE>

Why San Draw? Comparison Chart Talks

Manufacturer	San Draw	German Reprep
Model	S200	L320
XY resolution	0.04 mm ✨	0.2 mm
Z layer thickness	0.2 mm ✨	0.22 ~ 0.9 mm
Z axis Repetitive Positioning Accuracy	± 0.02 mm ✨	N/A
Print Volume	235 x 270 x 150 mm	250 x 320 x 150 mm
Printer Volume	700 x 700 x 700 mm	800 x 960 x 1957 mm
Print Volume / Printer Volume	0.03 ✨	0.008
Weight	60 kg ✨	350 kg
Material Choice	Silicone x2 ✨	Silicone x1
Material Certification	ISO 10993 ✨	
Software	San Draw FAMufacture ✨	Third party software Simplify3D
Air Compressor	Do not need ✨	required

We are not talking about **price** yet!

SIL50 and SIL70 are known for its excellent strength, flexible touch, and bio-compatible properties, making it suitable for various applications.

Auto Part



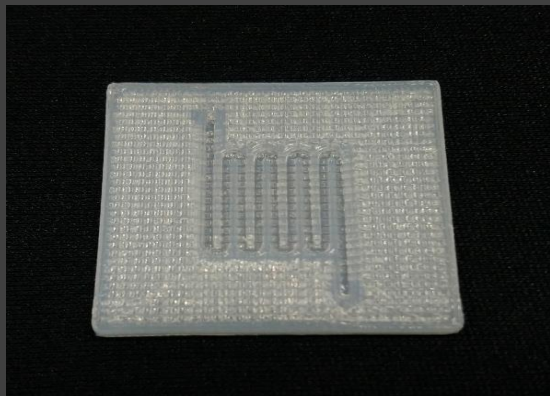
Insole



Seal



Microfluidic Channel



SIL50 and SIL70 are known for its excellent strength, flexible touch, and bio-compatible properties, making it suitable for various applications.

Bike Seat Pad



1:4 RC Bike Tire



Soft Robotic Gripper



Badge Cover



SIL50 and SIL70 are known for its excellent strength, flexible touch, and bio-compatible properties, making it suitable for various applications.

Baby Meal Accessory

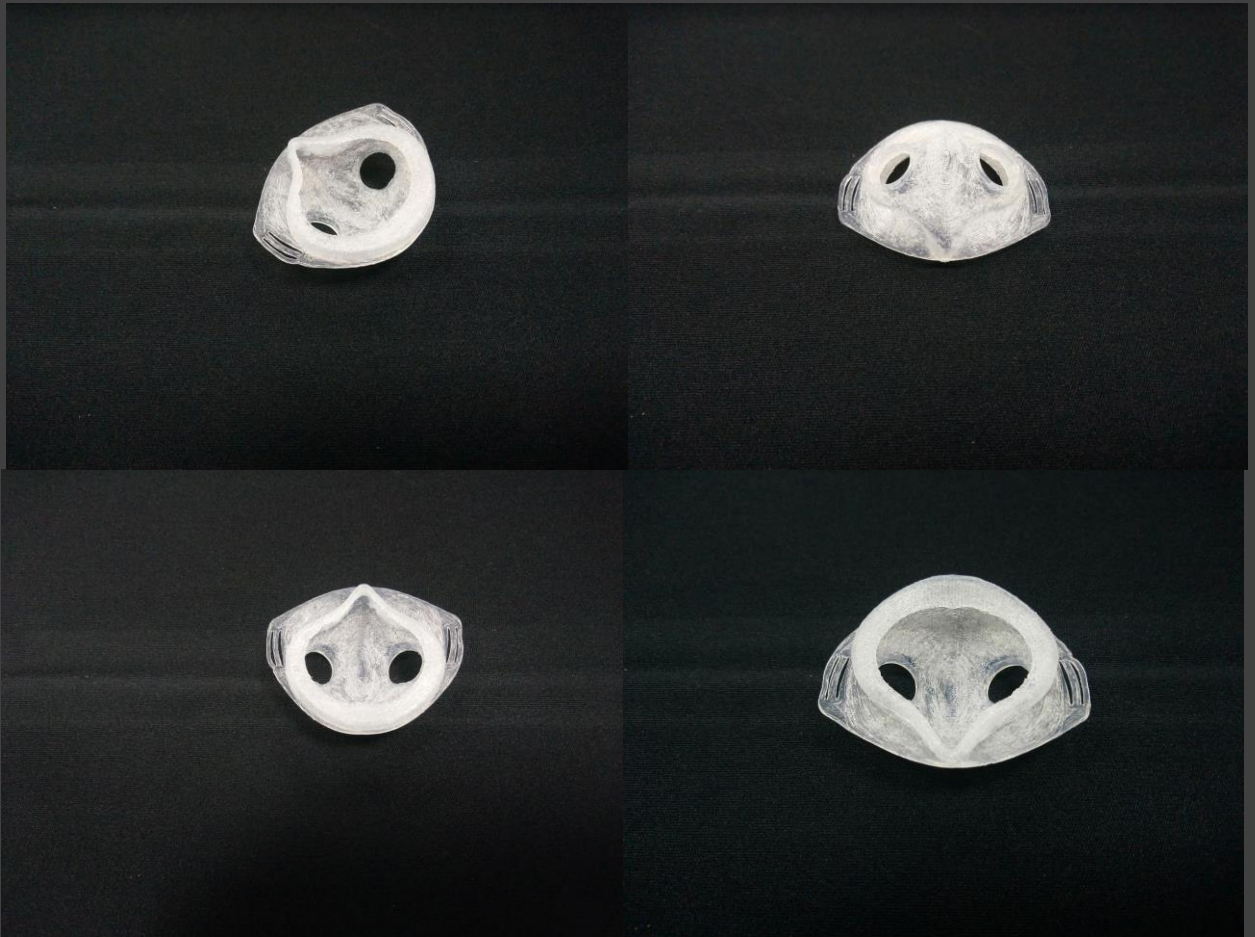


Baby Meal Plate



SIL50 and SIL70 are known for its excellent strength, flexible touch, and bio-compatible properties, making it suitable for various applications.

Nasal Mask





Print The Future

Email: info@sandraw.com
Website: <https://reurl.cc/bzE6lv>
Facebook: <https://reurl.cc/9Zpz7n>
YouTube: <https://reurl.cc/NXRy6>

San Draw Inc